

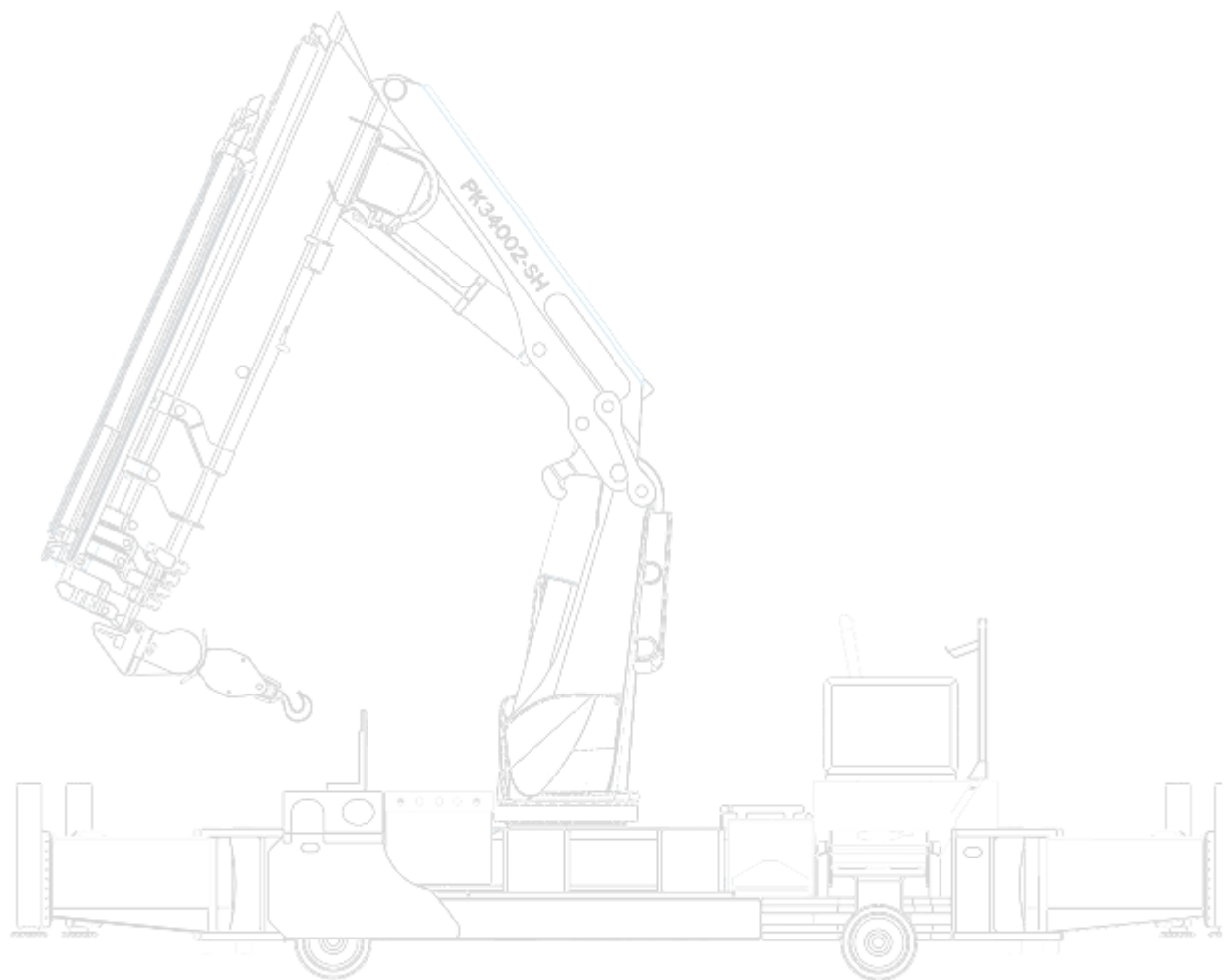


Information brochure

Kran Mobil PK 34



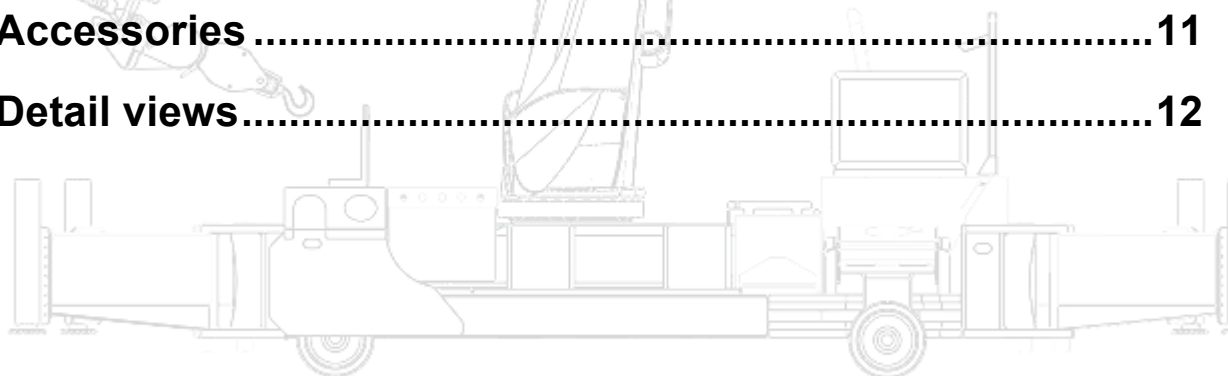
For maintenance of assembly lines and production lines



Zunhammer GmbH
Biebing 19 D-83301 Traunreut
Tel. 08669/8788-0 Fax 8788-33
www.kran-mobil.de
info@kran-mobil.de

Contents

Advantages of Kran Mobil PK 34	4
Technical data	5
Description of Kran Mobil	6
Chassis	6
Drive	6
Central supervision panel	6
Driving controls with mobile control panel (cable connected)	7
Steering types	7
Crane	8
Load chart PK 34002 SH E	10
Documentation	11
Accessories	11
Detail views	12



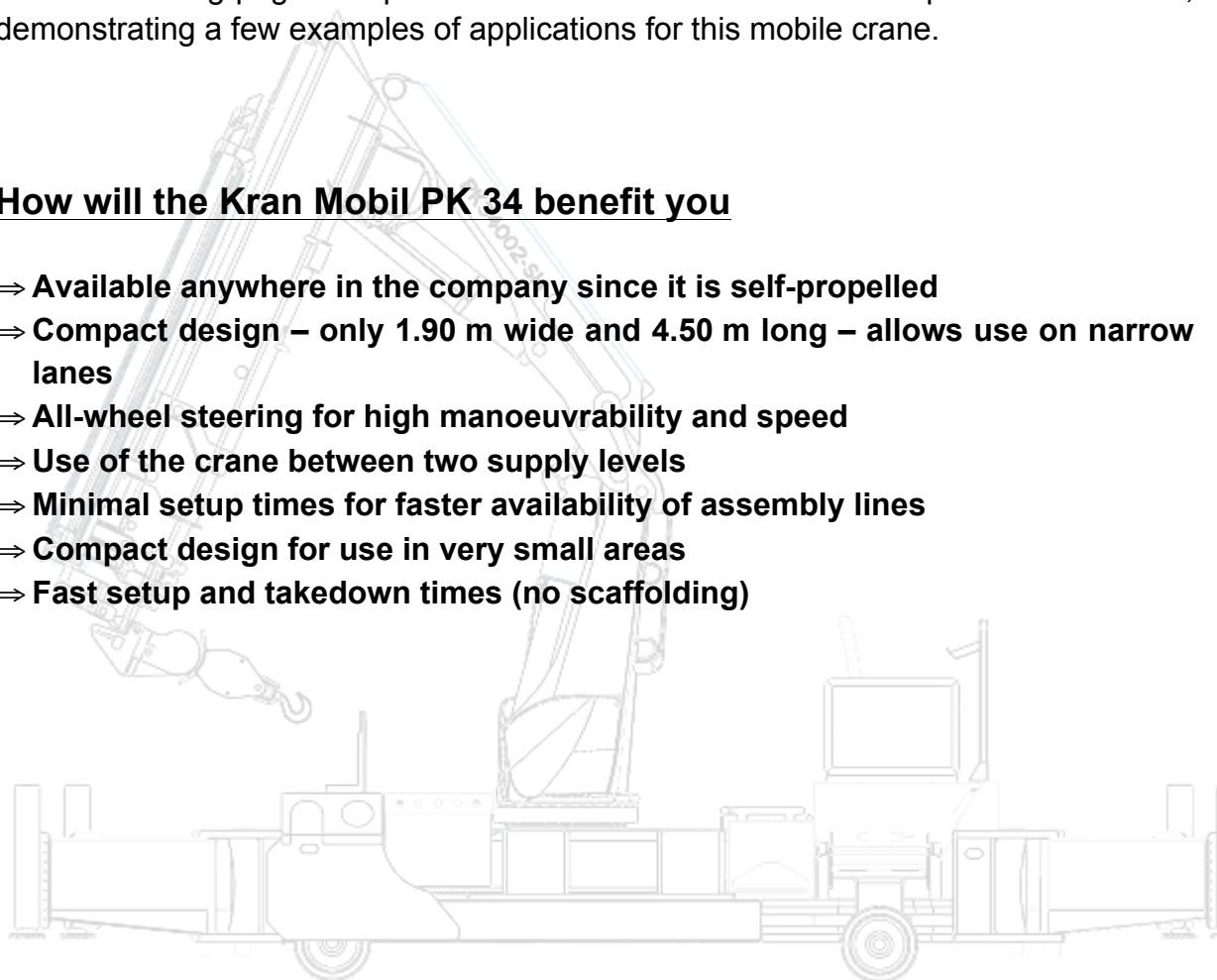
Advantages of Kran Mobil PK 34

Dear Prospective Customer,

On the following pages we present the **Kran Mobil PK 34** and explain the functions, demonstrating a few examples of applications for this mobile crane.

How will the Kran Mobil PK 34 benefit you

- ⇒ Available anywhere in the company since it is self-propelled
- ⇒ Compact design – only 1.90 m wide and 4.50 m long – allows use on narrow lanes
- ⇒ All-wheel steering for high manoeuvrability and speed
- ⇒ Use of the crane between two supply levels
- ⇒ Minimal setup times for faster availability of assembly lines
- ⇒ Compact design for use in very small areas
- ⇒ Fast setup and takedown times (no scaffolding)



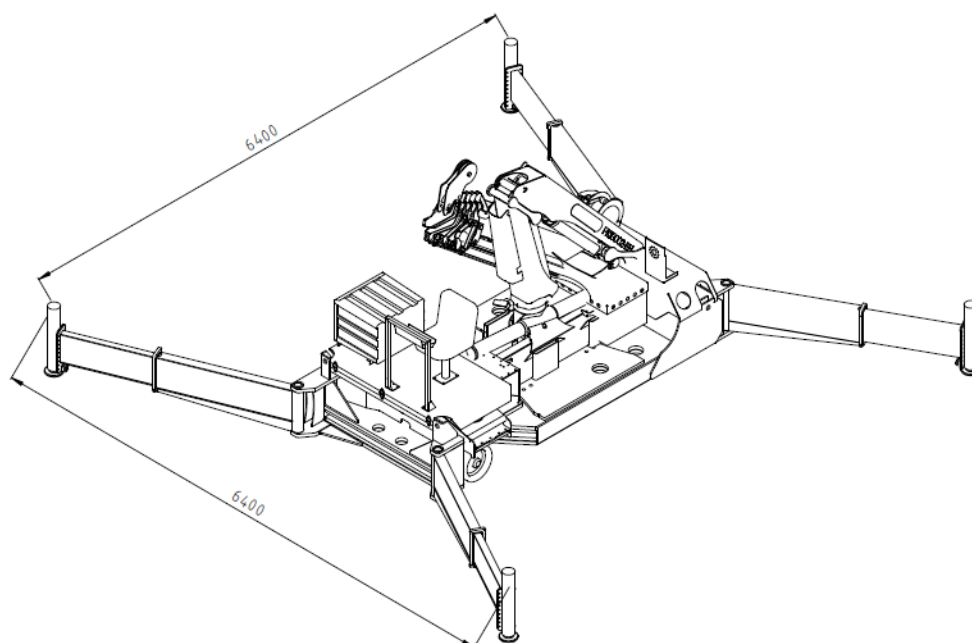
Technical data

Technical data

PK 34

Length:	4500 mm
Width:	1900 mm
Height, approx.:	2650 mm
Turning circle:	6.7 m outside
Weight, approx.:	16000 kg
Wheel load:	4 x 4000 kg
Electric propulsion:	80 VDC
Electric controls:	24/80 VDC
Electric crane system:	400 Volts

Maximum width of crane supports



Description of Kran Mobil

Chassis

- consists of a sturdy welded steel construction with reinforcements;
- frame prepared for mounting of the supports and the cargo crane;
- attachment lugs for crane loading
- including storage compartment mounted on chassis

Drive

- electric drive with 2 drive units, 4.5 KW each (2 wheels driven diagonally)
- 80 Volt, 240 Ah drive battery;
- rigidly mounted battery charger (400 VAC / 230 VAC)
- super-elastic Vulkolan tires 406 x 178
- electromechanical brakes on the drive unit
- max. speed ca. 6 km/h forward and 3 km/h reverse
- reverse driving with warning signal

Central supervision panel

- key-operated main switch for drive
- operating hours display
- separately controlled warning beacon
- support monitoring
- main switch for crane
- emergency shut-off for crane



Driving controls with mobile control panel (cable connected)

- passenger seat, without driver's cab
- mobile control panel with neck strap
- changeover switch forward/reverse
- brake
- emergency shut-off for drive
- selection switch for steering type

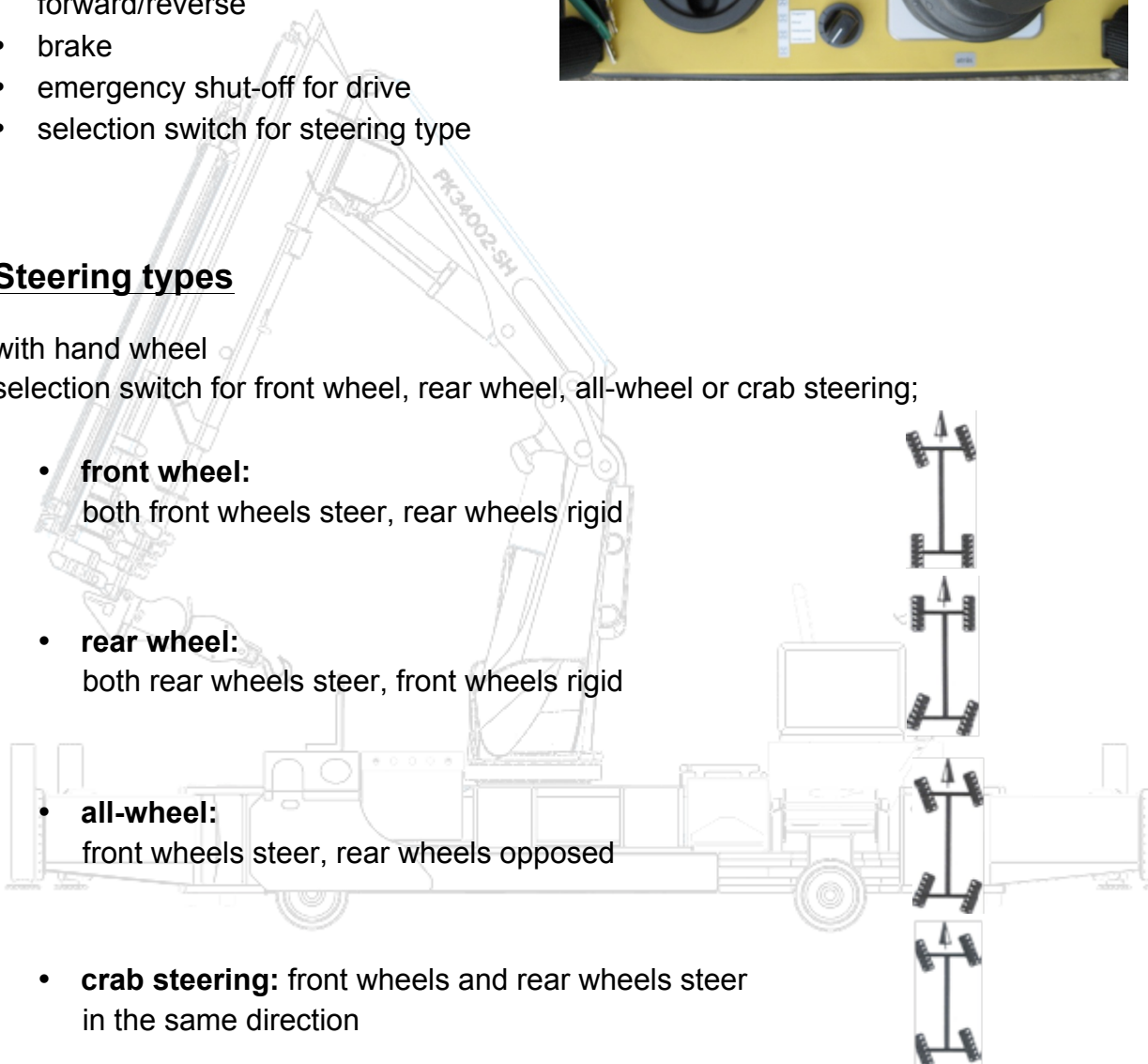


Steering types

with hand wheel

selection switch for front wheel, rear wheel, all-wheel or crab steering;

- **front wheel:**
both front wheels steer, rear wheels rigid
- **rear wheel:**
both rear wheels steer, front wheels rigid
- **all-wheel:**
front wheels steer, rear wheels opposed
- **crab steering:** front wheels and rear wheels steer in the same direction
- The steering lock for each direction is up to 60 degrees.



Crane

crane drive

- hydraulic unit with electric motor 18.5 KW, 400 V (VDE) with 32 A-plugs and cable drum (cable length 15 m)

work crane PK 34002 SH

for further technical details see
load chart

- fully hydraulic Palfinger
- see crane description
- overload protection
- load holding valves on lifting, offset and thrust cylinder
- emergency shut-off button
- all cylinders double-acting hydraulic
- 24 Volt standard electrical system
- high-pressure filter
- all oil filters are included for 1st servicing

extensive accessories

for further information see
Accessories chapter

- crane hook
- winch with block and tackle (lifting power 2340 kg on 1st turn)
- offset tip
- outrigger pads for enlarged support area

wireless remote control

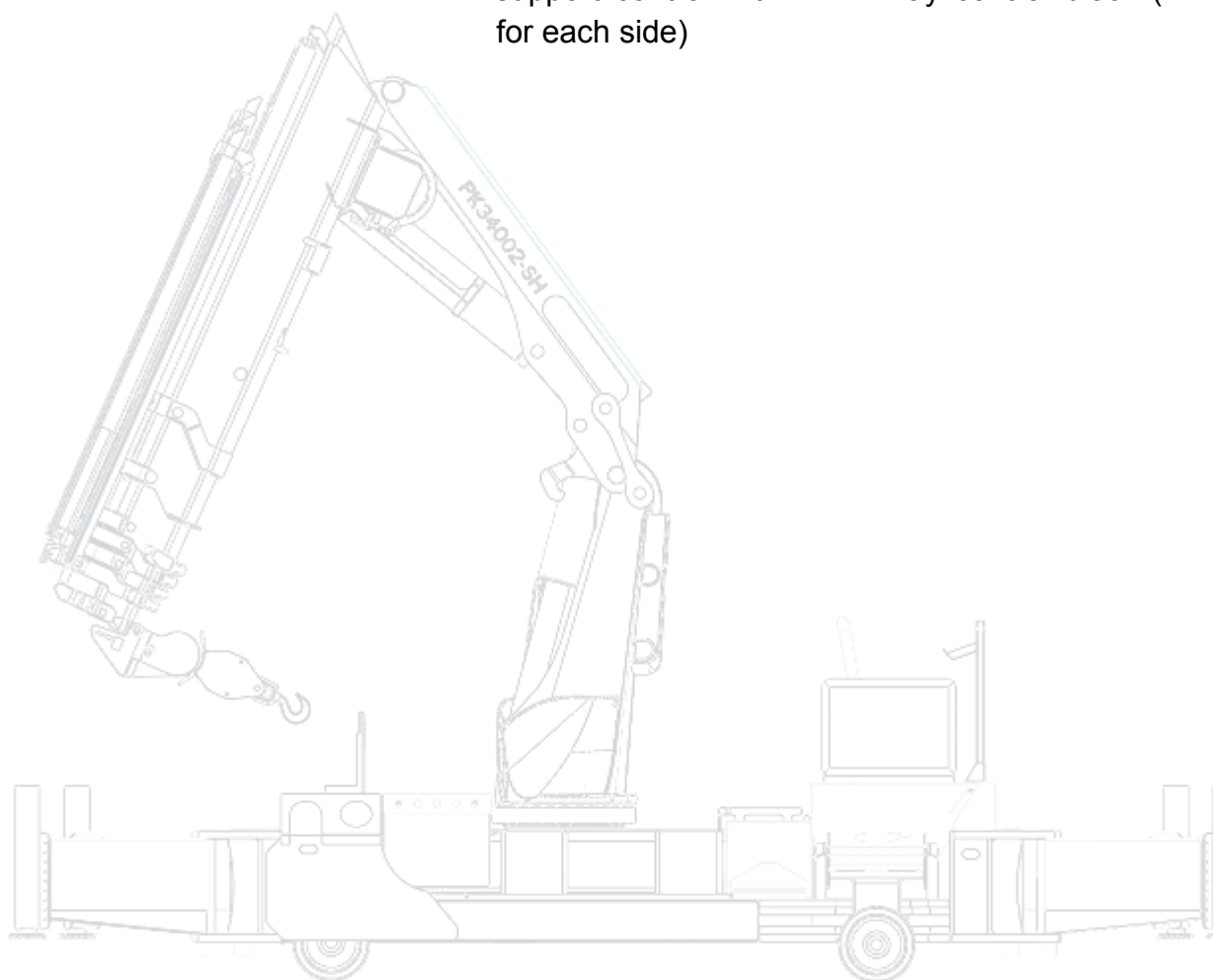
5-way wireless remote
control
DANFOSS/PALTRONIC

Consists of:

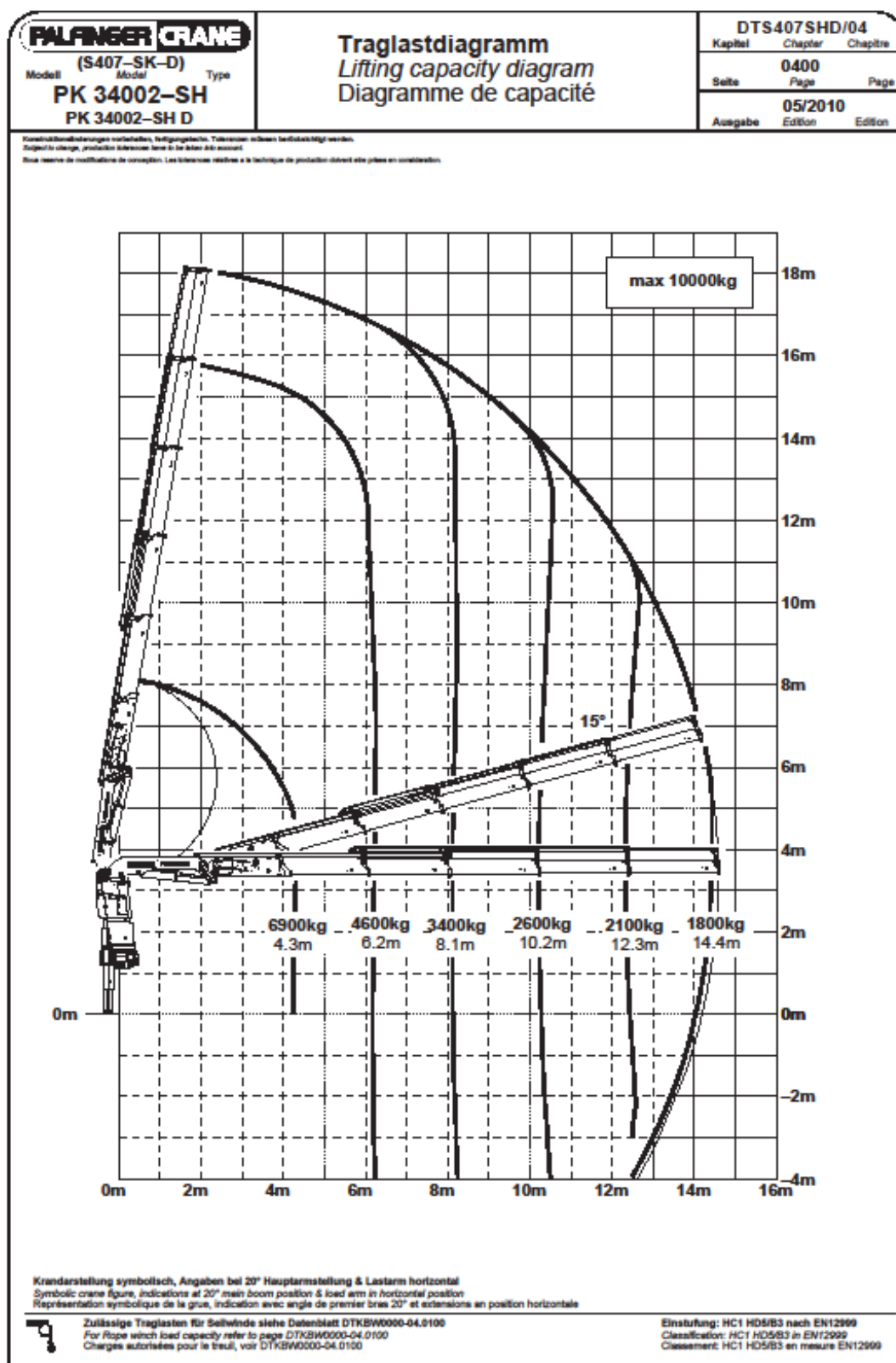
- DANFOSS control block,
- PALTRONIC wireless remote control, including proportional control panel with linear lever
- with transmitter, receiver,
- charger, 2 rechargeable batteries;
- with emergency shut-off solenoid valve,
- 24 volt operating voltage, without duplex connection, according to EN 50082-2; EMC Directive of EC (89/336/EEC)

Crane support

- hydraulically telescoping
- with 4 hydraulic tilting supports for the required footprint according to the Technical Data Sheet
- automatic safety control (all movements that increase the load moment are blocked before the tip-over limit is reached)
- monitoring of safety elements at the control panel and the individual supports
- support control with 2 x 4-way control block (1 for each side)



Load chart PK 34002 SH D



Documentation

- two copies (1x German, 1x in language of country where used)
- operating manual
- spare parts lists
- maintenance manual and maintenance schedule
- circuit diagrams for electrical and hydraulic systems
- crane inspection log book for accident prevention regulations (one annual safety inspection by an expert is required)
- CE Design with certificate
- 2 days of training/instruction in use of the crane system (travel expenses extra)

Accessories

crane hook

- lifting gear mounted directly on crane
- lifting of object by means of crane
- full load

winch

- lifting gear mounted on cable
- lifting of object by means of winch
- winch with block and tackle (lifting power 2340 kg on 1st turn)

offset tip

- lifting gear mounted directly on crane
- lifting of object by means of crane
- lifting height minimised by ca. 500 mm
- full load

outrigger pads

- enlarged contact area
- Kran Mobil can also be used for low top load forces

Detail views





